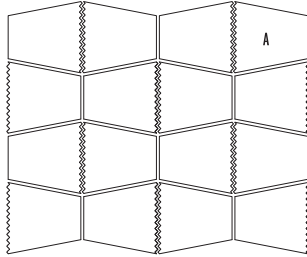




VALENCIA

DESCRIPTION: Fire pit **TEXTURE:** Split Face

PALLET OVERVIEW



TECHO-BLOC WARRANTY APPLIES TO BRANDON STONES
THE WARRANTY **DOES NOT APPLY** TO ACCESSORY KIT

NOTES

A Spark screen should always cover the fire bowl when the fireplace is in use.

Insert sold separately. Techo-Bloc is not responsible for any damages to the firepit if it is not installed with a sleeve or accessory kit. The firepit is not designed for large fires. Fire should be contained at least 6" away from the firepit wall blocks. Overheating could lead to heat damage to the firepit components.

OPTIONS AND ACCESSORIES ARE SOLD SEPARATELY.

See 120 for more technical information.

Specifications per pallet	Imperial	Metric
Cubing	80 units	80 units
Approx. Weight	1 557 lbs	706 kg
Height	14 ¾ in	375 mm
Exterior Diameter	48 15/16 in	1 243 mm
Interior Diameter	29 1/8 in	740 mm
Number of rows	5	

Unit dimensions	in		mm		Units/pallet
	in	mm	in	mm	
Height	2 15/16	75	2 15/16	75	80 units
Depth	9 13/16	250	9 13/16	250	
Length	9 ¾	247	9 ¾	247	



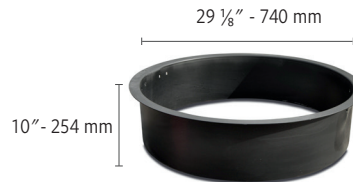
A



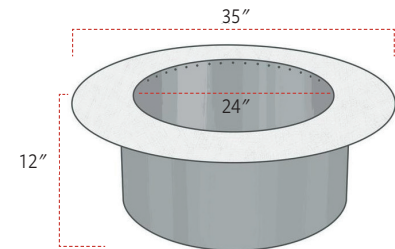
Options and accessories (sold separately)

Sleeve Insert

Wood firepit



Smokeless Insert



Chestnut Brown

Sandlewood

Champlain Grey

Shale Grey



Burners and Accessories

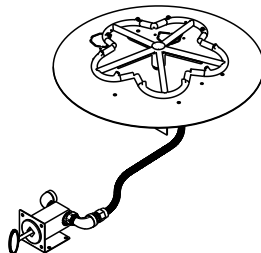
HPC Burners

Features:

Natural Gas or Liquid Propane
Standard BTU: 65K
Push button ignition

Includes:

Stainless steel burner with aluminum pan, mounting brackets, Dante valve with push-button ignition, vents, lava rock and stainless steel cover.



Grilling System Outpost™

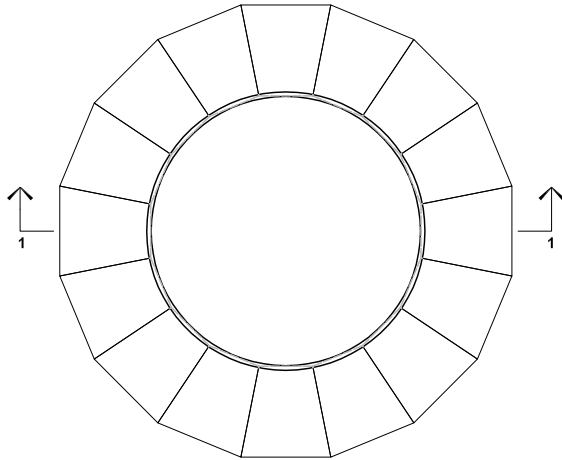
Only for Smokeless inserts

Transforms fire pit into wood-fired grill.
Weight: 12 lbs. 9 oz.
Diameter: 22 inches

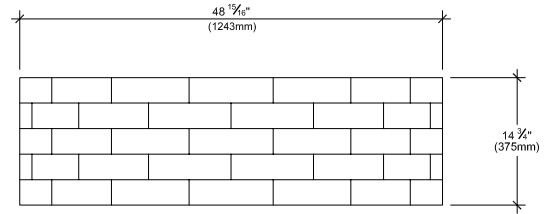


INSTALLATION GUIDE

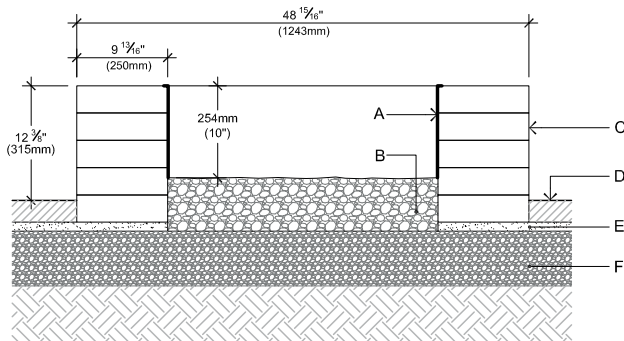
VALENCIA FIRE PIT (KIT)



TOP VIEW



ELEVATION A



SECTION 1-1

- A. STEEL BOX INSERT
- B. CLEAN STONE $\frac{3}{4}$ " (20 mm), 6" (150 mm) THICK
- C. VALENCIA BLOCK
- D. TECO-BLOC PAVERS OR SLABS
- E. SETTING BED 1" (25 mm)
- F. COMPACTED GRANULAR BASE 0- $\frac{3}{4}$ " (0-20 mm)

QUANTITY OF MATERIALS REQUIRED

- Valencia block: **80**

NOTE: Secure the blocks using a heat resistant concrete adhesive. The installer must ensure that the installation and use of the fire pit comply with local regulations and code requirements.

Consult our Installation Guide in our website for a detail step by step installation.