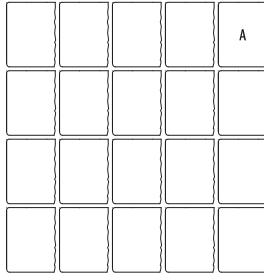




BELGIK

DESCRIPTION: Edge **TEXTURE:** Split Face and Aged

PALLET OVERVIEW



NOTES

The Belgik border can be installed with mortar joints.

See 253 for more technical information.

Specifications per pallet	Imperial	Metric
Cubing	120 units	120 units
Linear coverage per pallet	98.43 lin. ft	30 lin. m
Approx. Weight	2 610 lbs	1 184 kg
Number of rows	6	
Linear coverage per row	16.40 lin. ft	5 lin. m
	1 lin. ft = 1.22 units	1 lin. m = 4 units



A



Unit dimensions	in	mm	Units/pallet
Height	6 ¹⁵ / ₁₆	177	120 units
Depth	3 ¹⁵ / ₁₆	100	
Length	9 ¹³ / ₁₆	250	

Chestnut Brown



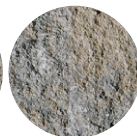
Mojave Beige



Sandlewood



Champlain Grey



Shale Grey

