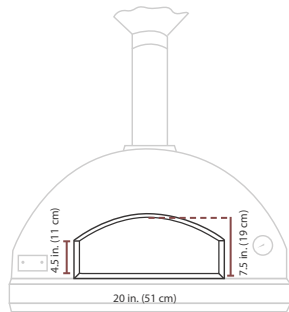
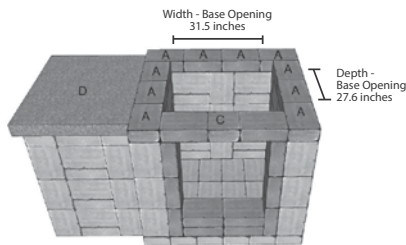


MANCHESTER FOYER PIZZA OVEN RUSTIC

DESCRIPTION: Pizza oven TEXTURE: Smooth and Aged



COMES WITH VARIOUS PIZZA ACCESSORIES. 2 pieces Modular system, Sold as a kit not pre-assembled.

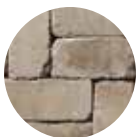


NOTES

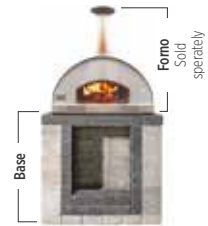
See 260 for more technical information about the Manchester Rustic pizza oven.

Cooking surface dimensions: 24" x 32" (610 x 813 mm)

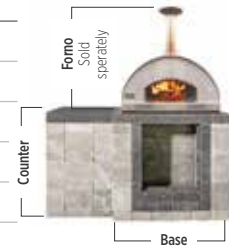
chestnut brown



Specifications per pal.		Imperial	Metric
BASE	Approx. Weight	2 803 lbs	1 271 kg
	Height	43 5/16"	1 100 mm
	Depth	43 5/16"	1 100 mm
	Length	47 1/4"	1 200 mm
	Manchester shale Grey	112	
	Manchester onyx black	23	



Specifications per pal.		Imperial	Metric
COUNTER	Approx. Weight	2 330 lbs	1 056 kg
	Height	42 15/16"	1 090 mm
	Depth	37"	940 mm
	Length	30"	762 mm
	Counter top	1	
	Manchester shale Grey	64	



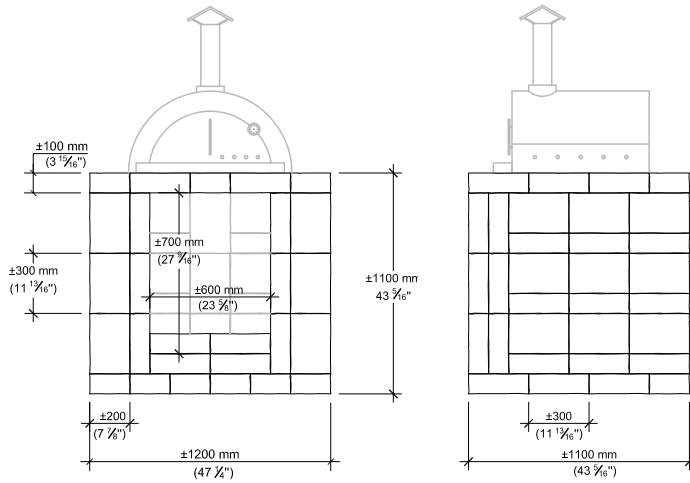
Specifications per pal.		Imperial	Metric
FORNO PIZZA OVEN	Approx. Weight	400 lbs	181 kg
	Height	45 11/16"	1 160 mm
	Width	33 11/16"	855 mm
	Length	38 9/16"	980 mm



INSTALLATION GUIDE

MANCHESTER RUSTIC, PIZZA OVEN

MODULE WITHOUT COUNTER TOP



FRONT ELEVATION

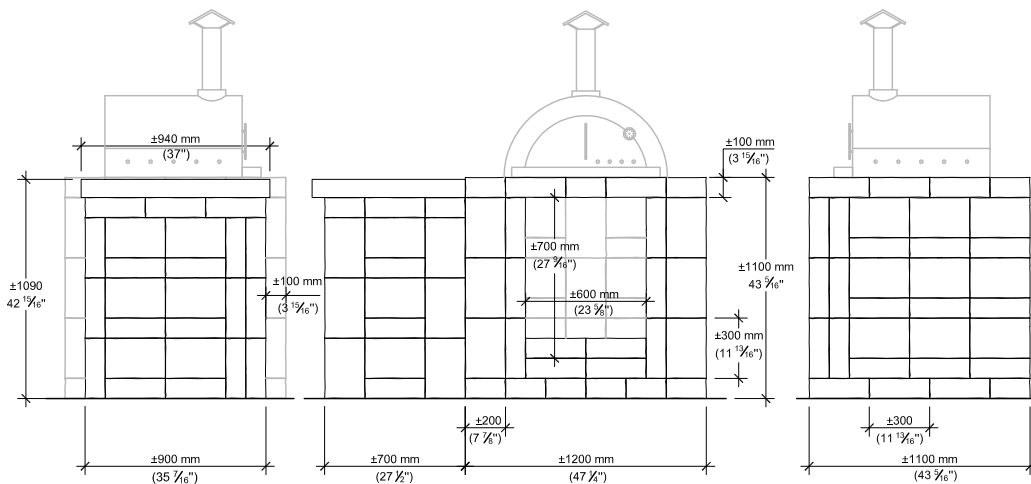
RIGHT SIDE ELEVATION

QUANTITY OF MATERIALS REQUIRED - MODULE WITHOUT COUNTER TOP

Manchester block (shale grey): **112**

Manchester block (onyx black): **23**

MODULE WITH COUNTER TOP



LEFT SIDE ELEVATION

FRONT ELEVATION

RIGHT SIDE ELEVATION

QUANTITY OF MATERIALS REQUIRED - MODULE WITH COUNTER TOP

Manchester block (shale grey): **176**

Manchester block (onyx black): **23**

Counter top: **1**

NOTE: Secure the blocks using a heat resistant concrete adhesive. The installer must ensure that the installation and use of the pizza oven comply with local regulations and code requirements. The construction of the base should include the installation of a concrete slab and pillars under the slab. The depth of the pillars and reinforcement requirements should be determined based on site conditions and comply with local code. Consult our Installation Guide in our website for a detail step by step installation.