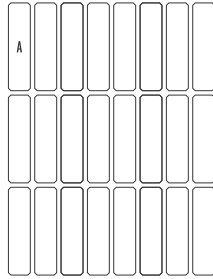




RAFFINATO 90 mm

DESCRIPTION: Edges TEXTURE: Smooth or Polished

PALLET OVERVIEW - SMOOTH



Specifications per pallet		Imperial	Metric
90 mm SMOOTH	Cubing	48 units	48 units
	Approx. Weight	1 548 lbs	702 kg
	Number of rows	2	

Unit dimensions		in	mm	Units/pallet
	Height	3 ⁹ / ₁₆	90	48 units
	Depth	9 ¹³ / ₁₆	249	
	Length	14 ¹ / ₈	359	

PALLET OVERVIEW - POLISHED



Specifications per pallet		Imperial	Metric
90 mm POLISHED	Cubing	40 units	40 units
	Approx. Weight	1 559 lbs	707 kg
	Number of rows	2	

Unit dimensions		in	mm	Units/pallet
	Height	3 ⁹ / ₁₆	90	40 units
	Depth	9 ³ / ₄	248	
	Length	14 ¹ / ₁₆	357	



NOTES

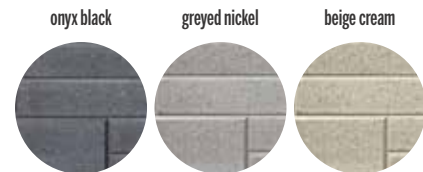
See 240 for more technical information.

*Polished products are available on order only.

SMOOTH



POLISHED*

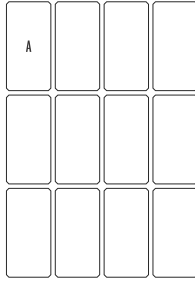




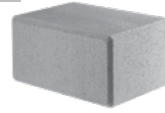
RAFFINATO 180 mm

DESCRIPTION: Edges TEXTURE: Smooth or Polished

PALLET OVERVIEW - 180 mm SMOOTH

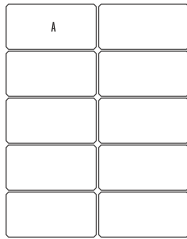


Specifications per pallet		Imperial	Metric
180 mm SMOOTH	Cubing	24 units	24 units
	Approx. Weight	1 529 lbs	694 kg
	Number of rows	2	



Unit dimensions	in	mm	Units/pallet
Height	7 ¹ / ₁₆	180	24 units
Depth	9 ¹³ / ₁₆	249	
Length	14 ¹ / ₈	359	

PALLET OVERVIEW - 180 mm POLISHED



Specifications per pallet		Imperial	Metric
180 mm POLISHED	Cubing	20 units	20 units
	Approx. Weight	1 557 lbs	706 kg
	Number of rows	2	



Unit dimensions	in	mm	Units/pallet
Height	7 ¹ / ₁₆	180	20 units
Depth	9 ³ / ₄	248	
Length	14 ¹ / ₁₆	357	



NOTES

See 240 for more technical information.

*Polished products are available on order only.

SMOOTH

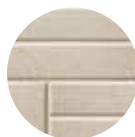
onyx black



greyed nickel



beige cream



POLISHED*

onyx black



greyed nickel



beige cream

