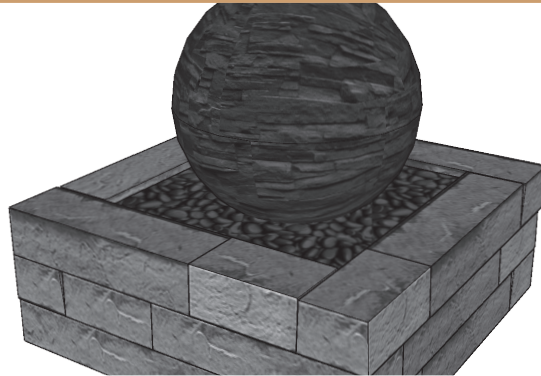


RÖCKA WALL WATER FEATURE



The Röcka Wall water feature adds a classy touch that is sure to elevate any space. Add this serene water feature to any front or backyard project for a more discerning client.

Build time*: 1 hr

Staff: 1

Total labor hours: 1-2 hr

*(excluding base construction & post-construction wash/seal)

Material Checklist

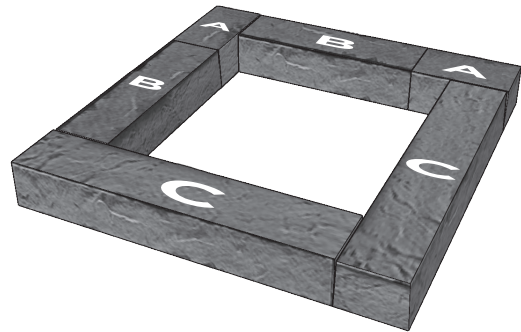
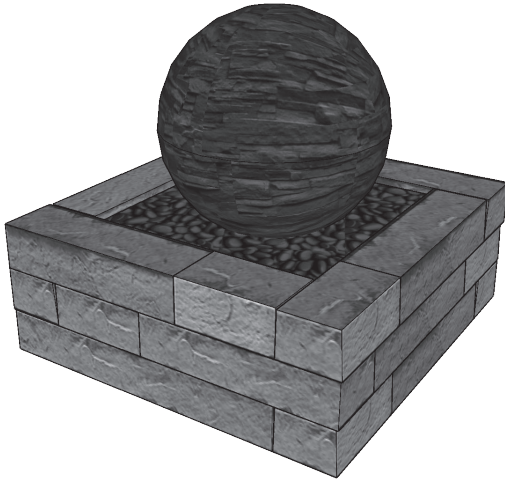
- ASTM #57 or ASTM C-2940
- ASTM #8 or ASTM C-33
- Geotextile
- 1 pallet Röcka Wall
- Construction adhesive
- Water feature basin & accessories

RÖCKA WALL WATER FEATURE

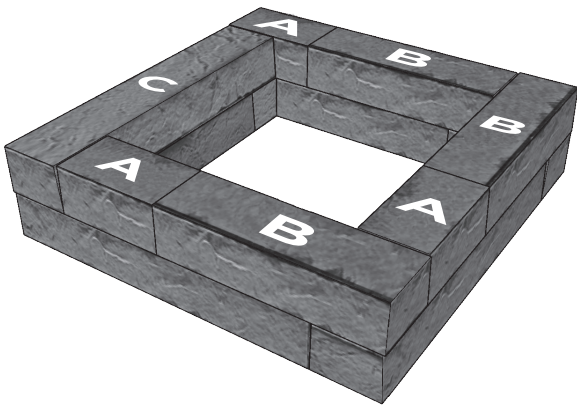
Process

- Run conduits for electrical and water (for optional auto-refill)
- Classify, amend and compact soil subgrade — final surface should not have greater than +/- 3/8" over 10'
- Install appropriate geotextile (extended up sides of excavation and shingled with flow of water)
- Install base (open-graded base: ASTM #57 or dense-graded base: ASTM C-2940) minimum 4"-6" thickness
- Install 1" leveling bed (open-graded: ASTM #8 or dense-graded: ASTM C-33) **optional*
- Install Röcka Wall units as per plan
- Apply appropriate construction adhesive between units
- Trial fit of water feature basin, evaluate need for internal basin supports (block supports or aggregates)
- Post-construction wash and application of water-repellent sealer **optional, to avoid water staining*
- Install water feature basin & accessories

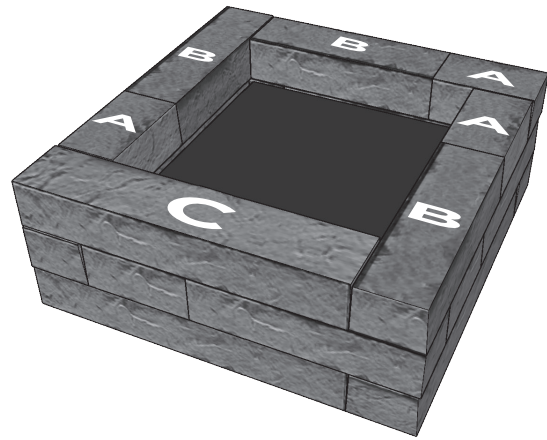
RÖCKA WALL WATER FEATURE



Row 1

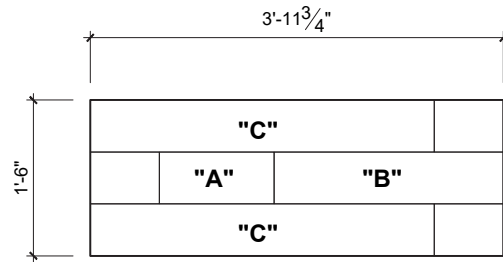
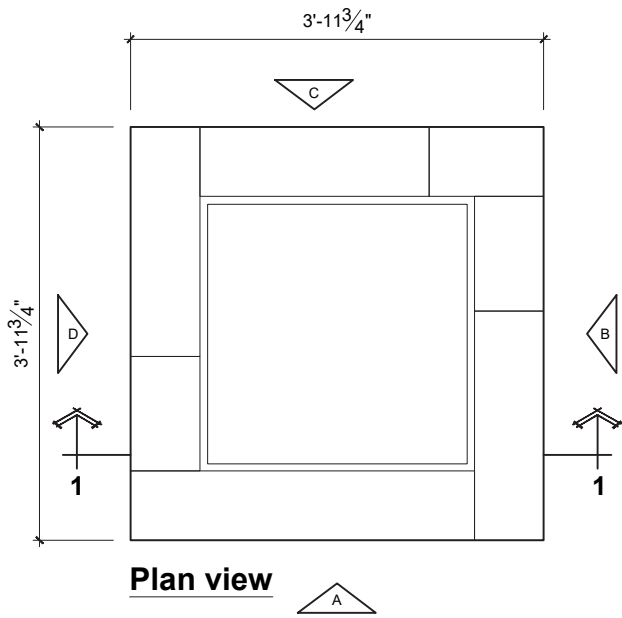


Row 2

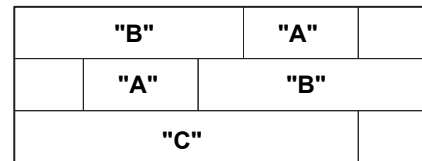


Row 3

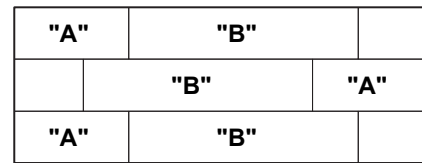
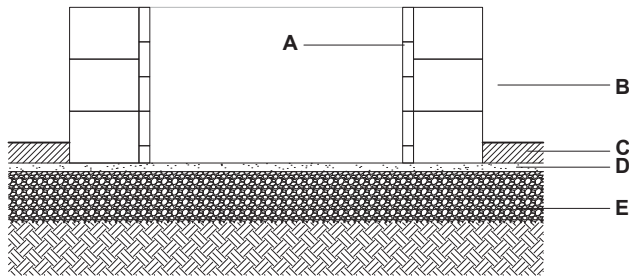
RÖCKA WALL WATER FEATURE



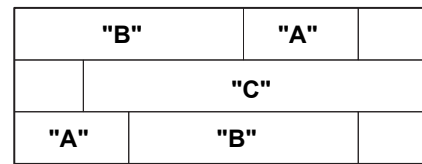
Elevation A



Elevation B



Elevation C



Elevation D

QUANTITY OF MATERIALS REQUIRED
 Rocka wall unit: 1 PAL

- A. REFRACTORY BRICK
- B. ROCKA WALL UNIT
- C. TECHO-BLOC PAVERS OR SLABS
- D. SETTING BED 1" (25 mm)
- E. COMPACTED GRANULAR 0-3/4" (0-20 mm)

NOTE: Secure the blocks using a concrete adhesive.
 The installer must ensure that the installation and use of the fire pit comply with local regulations and code requirements.